

Options Consideration

October 5, 2023

A dark blue diagonal gradient bar that starts from the bottom left corner and extends towards the top right corner, covering the lower half of the slide.

*Thank
You!*

The Hillsdale Board of Education

Our Parents

Hillsdale Residents

**Borough of Hillsdale Business
Administrator**

Agenda

Brief History

**Overview of Options
and Estimated Cost**

Breakout Sessions

Group Feedback

Closing

June 1 Meeting Feedback

- *The cost was too high*
- *Something needs to be done relating to George G White*
- *Relocate 5th grade to their respective elementary schools*
- *More communication*

The Barriers

There is a Cost
Divided Feelings
Time

Social Media
I have a guy . . .
Current Events

Guiding Principles



- ***Save George White***
- ***Maximize State Aid***
- ***Lower Tax Impact***

The Constraints

- The size of a classroom - Approx 540 sq ft.
- The number of classrooms
 - Every period rooms are filled
 - Restricting Scheduling
- Science Labs
 - Only 3 science labs when 4 are needed
 - Every science lab is dated and in need of updating for for access to a 21st century learning experience
- No dedicated STEM space
- Music
 - Currently use a small instruction space behind the stage for chorus
 - Band uses the stage in the multi-purpose room
- TV Production Studio
 - Classroom is among the smallest
 - Technology dates back 10 years - In need of renovated inviting space
- Cafetorium/ Multi Purpose Room
 - Acoustics, Lighting, Sound, Stage Space, Air Conditioning, Basketball Court

The Constraints Continued . . .

- Student lockers - When in use consistently, combination locks are consistently breaking, jamming, or malfunctioning
- No student common space to welcome gathering collaboration, social interaction
- Mechanical Systems
 - Heating
 - Electric
- Restrooms - You have seen them, but this is coupled with frequency in sink, stall and urinal closings
- Nurse's Office - Small, poor traffic flow for nurse and students, open space with added privacy for those experiencing illness/personal need
- Wellness Space
- Counseling space for students - Limited
- When it rains . .
- Parking
- Drop-Off/Pick-Up Zones

The Constraints Continued . . .

- Cafeteria Services - No built for servicing 500+
- Intercom System - Showing its age - Sounds begins to diminish as the lines travel from the main office
- Conference Room Space- Parent meetings
- Small Group Instruction Rooms
- Stairwell- Conditions and width
- Building Facade, Cement Structure and Exterior Attributes
- Field/Blacktop Area
- Flooring
- Windows
- Storage - Teacher classrooms, gym, multi-purpose room, books overall

*A Rainy Day
at George
White Middle
School . . .*

Sept. 2023



Timeline

Projected September 2024 Referendum

September 2024 - Referendum Vote

July 2024 - Submission of Referendum Question to Bergen County Office of Elections

June 2024- Anticipated Receipt of PEC Letter

February 2024 - Submission of Plan to NJ Department of Education

Jan/Feb.2024- Decision on Plan

December 2023- Options/Review Feedback

November 2023 - Options/Review Feedback

October 2023 - Options Review/Feedback

Next Steps

***Replan
&
Recalibrate***

The 3 Options

A large, solid dark blue shape that starts from the bottom left corner and extends diagonally upwards towards the right, covering the bottom half of the slide.

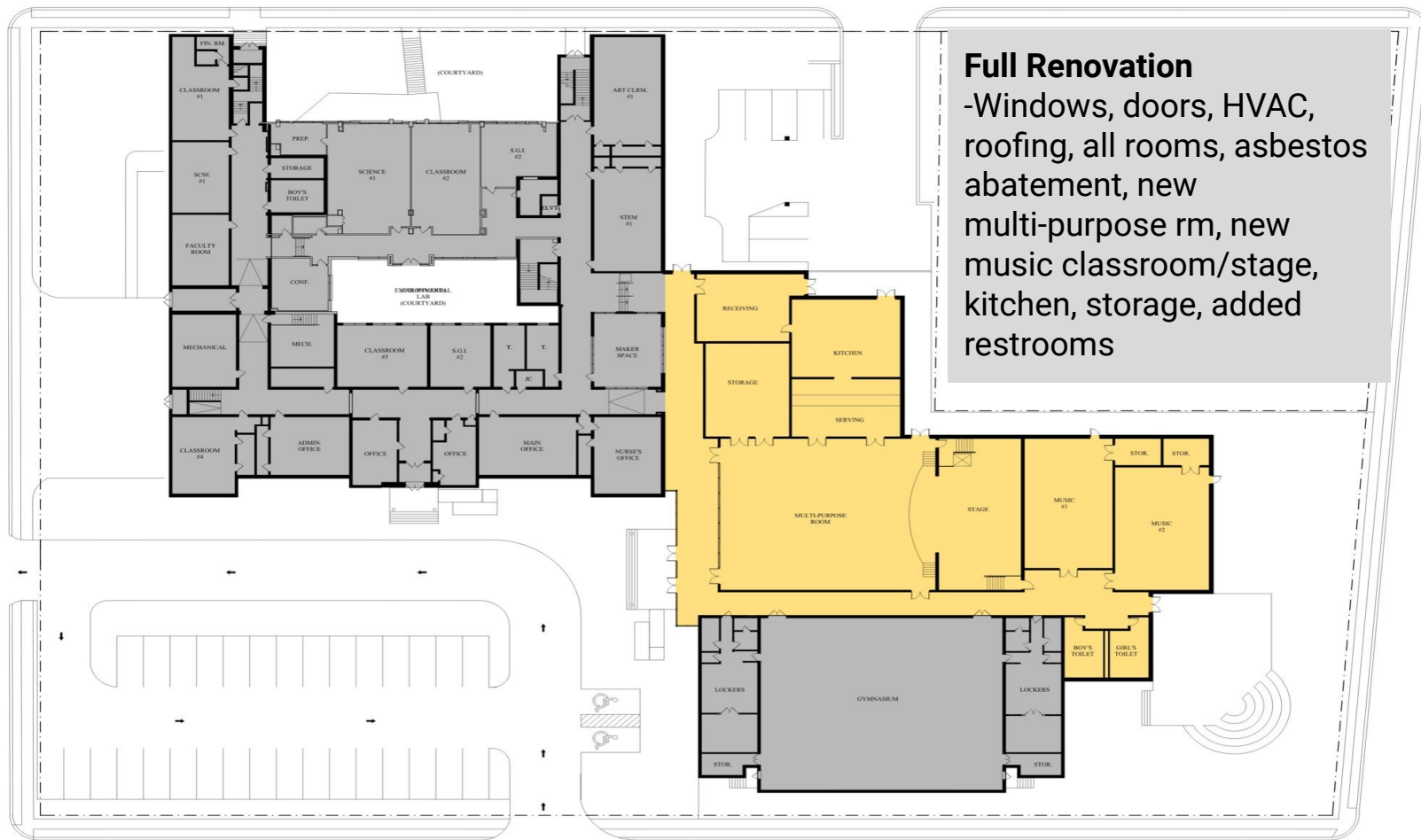
The 3 Options – Background Knowledge

A dark blue diagonal gradient bar that starts from the bottom left and extends towards the top right, covering the lower half of the slide.

Meadowbrook
Addition -
Proposed



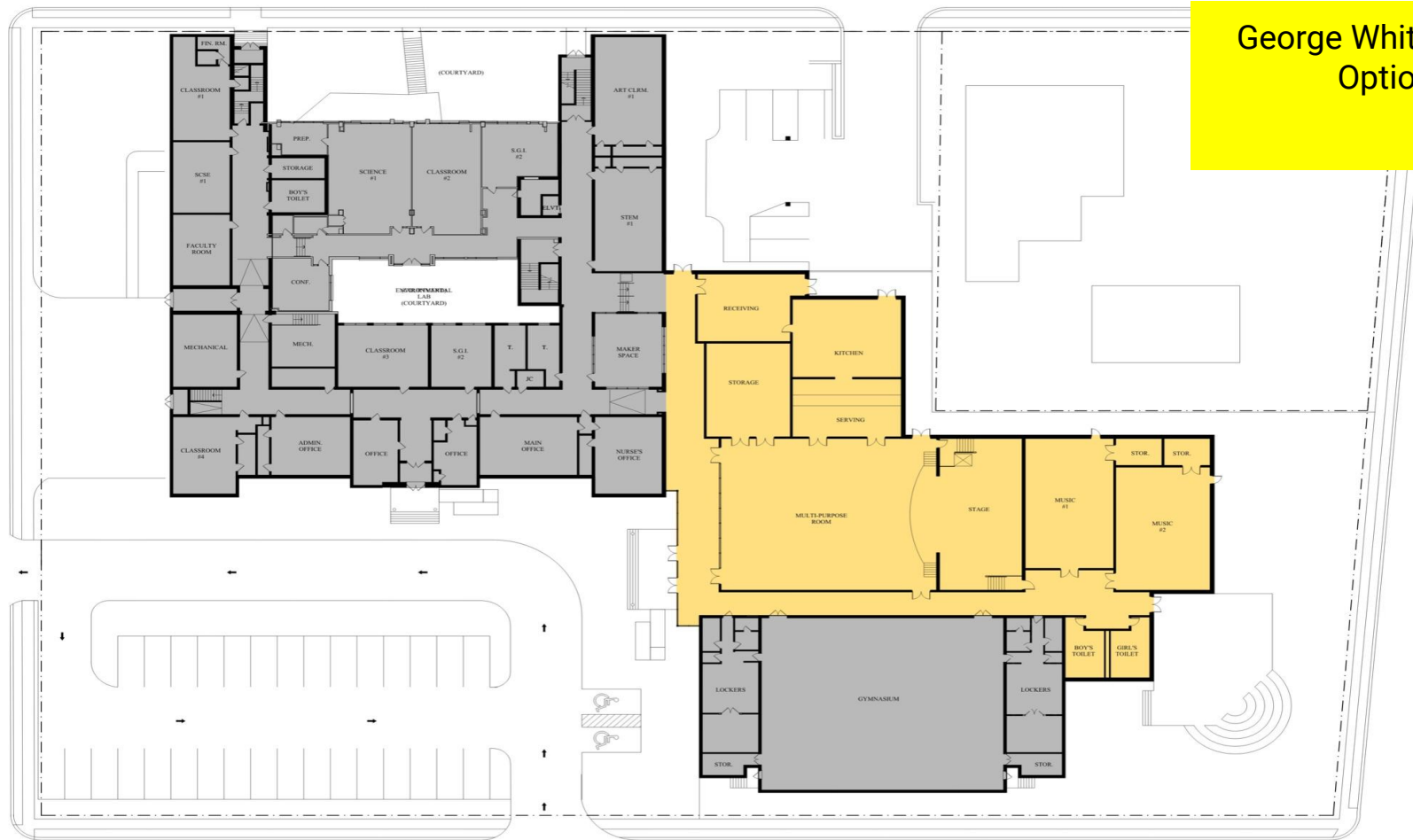
[illegible]



Option 1

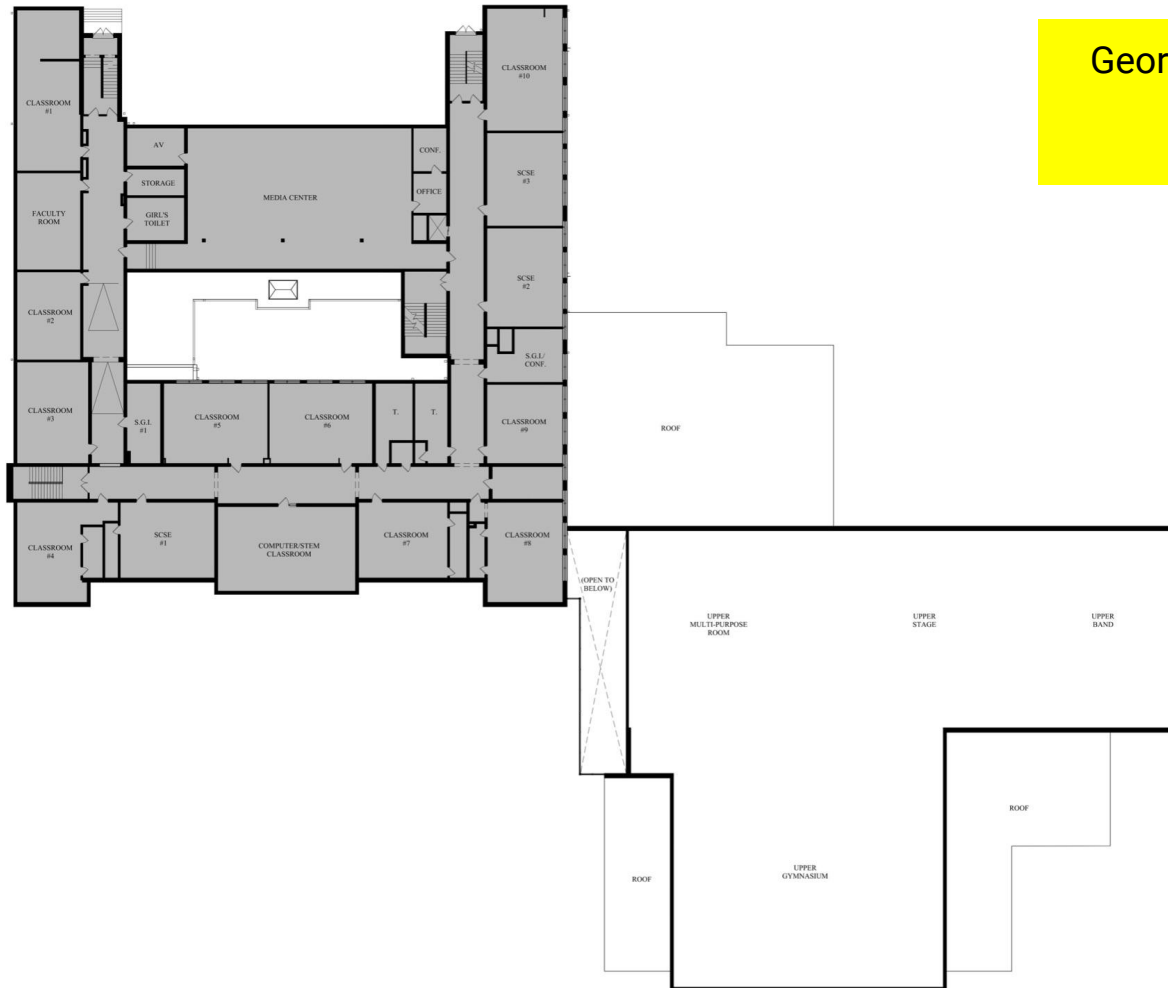


George White - Floor 1 Option 1

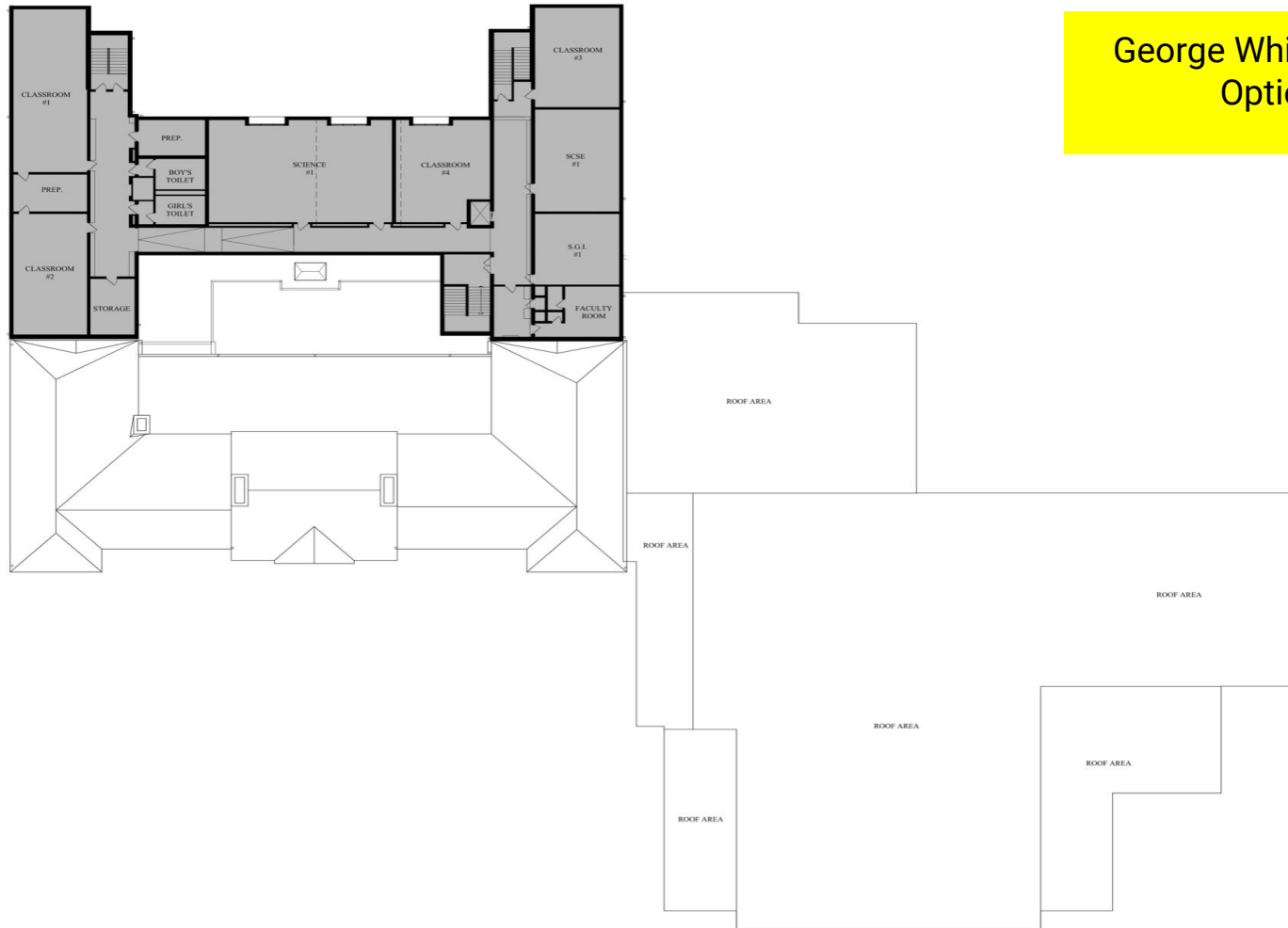


MAGNOLIA AVENUE

George White - Floor 2 Option 1



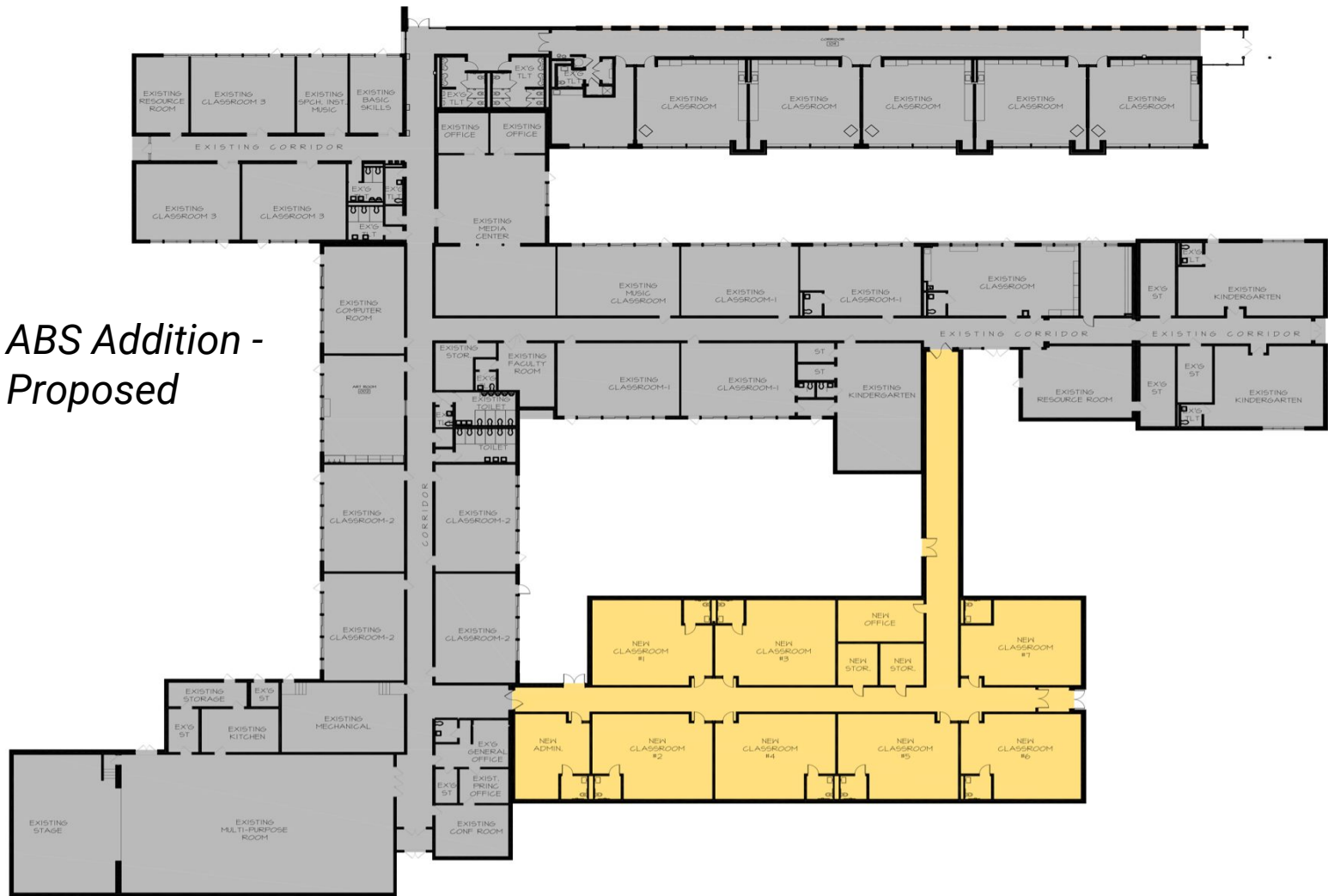
George White - Floor 3 Option 1



Meadowbrook
Addition -
Proposed



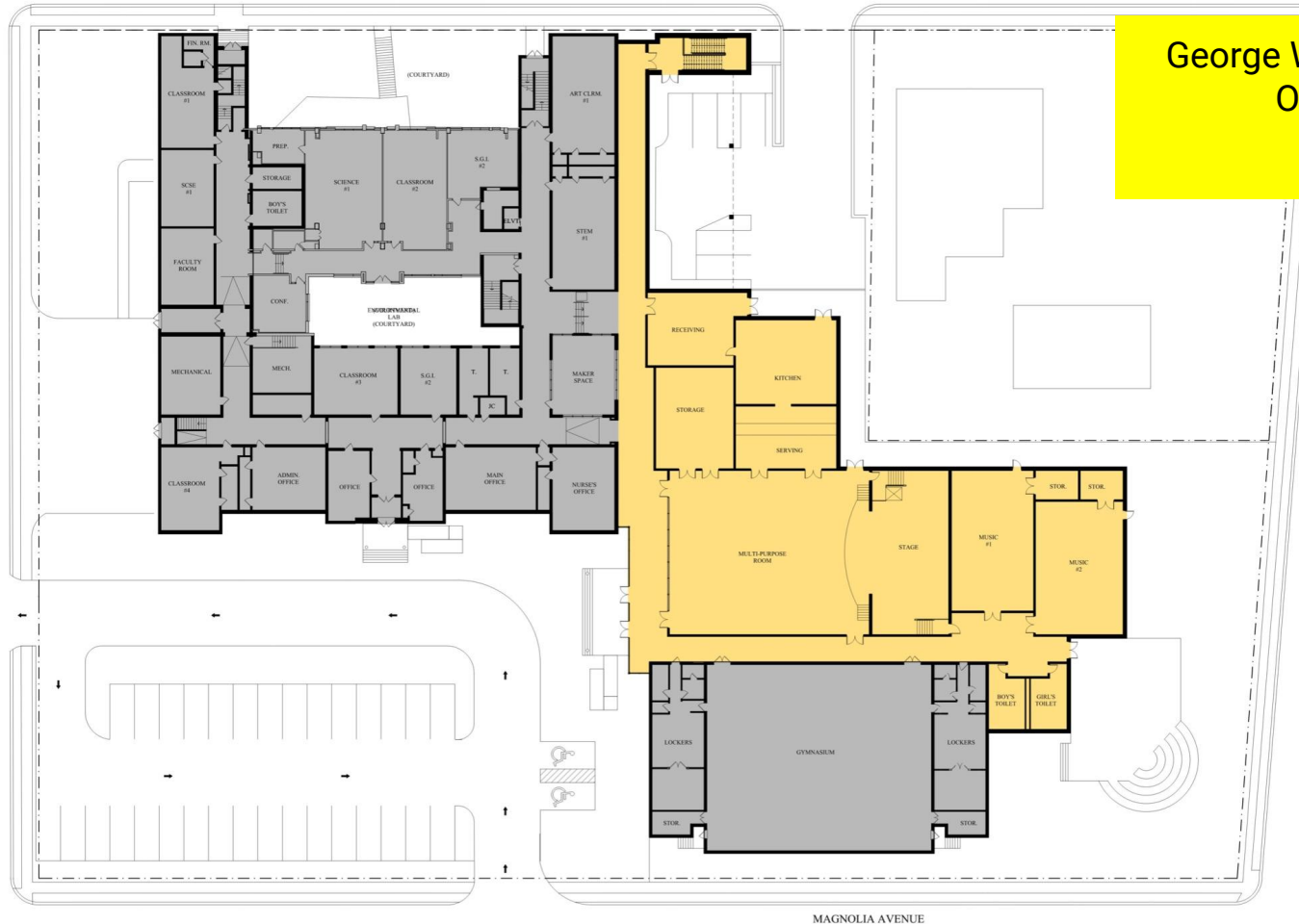
ABS Addition - Proposed



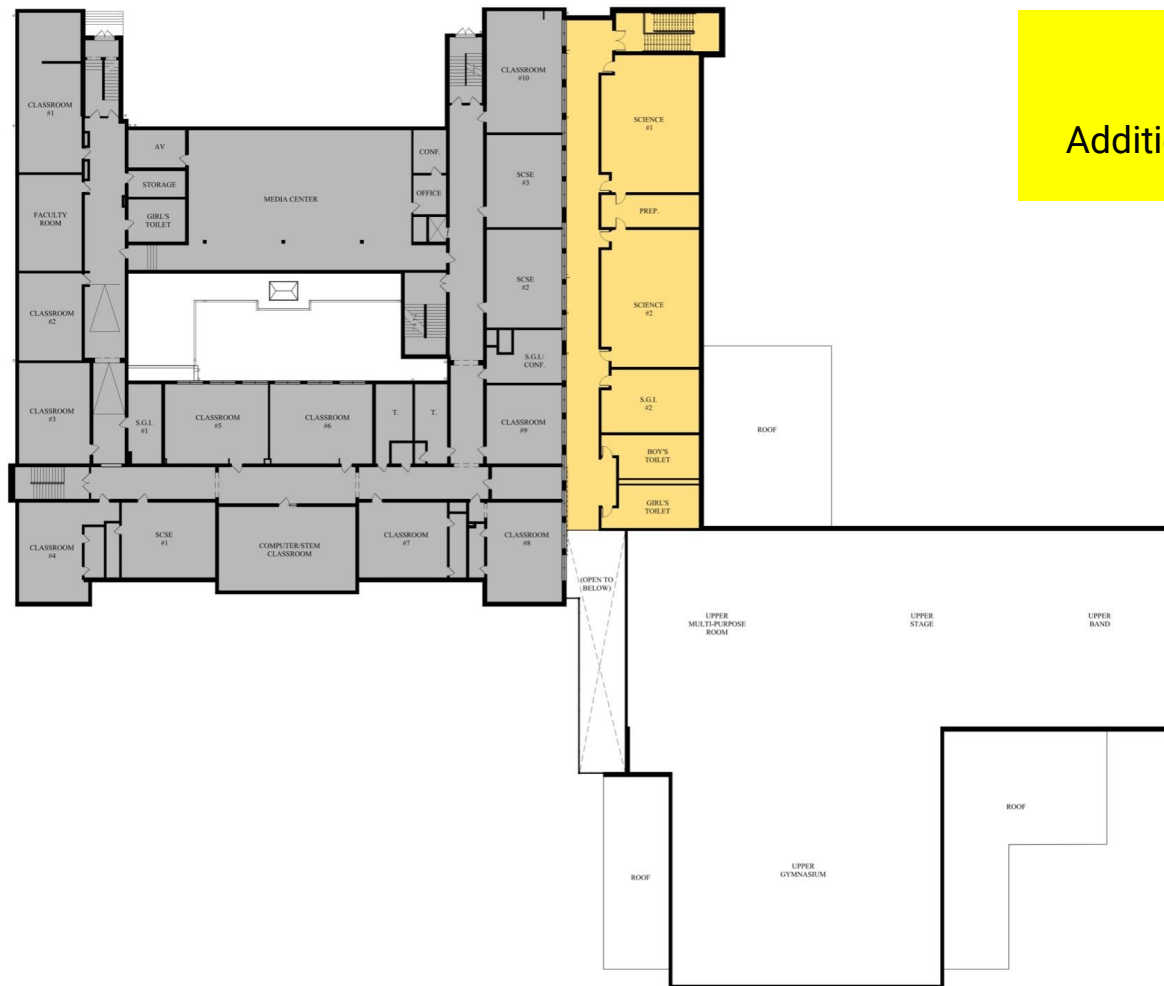
Option 2

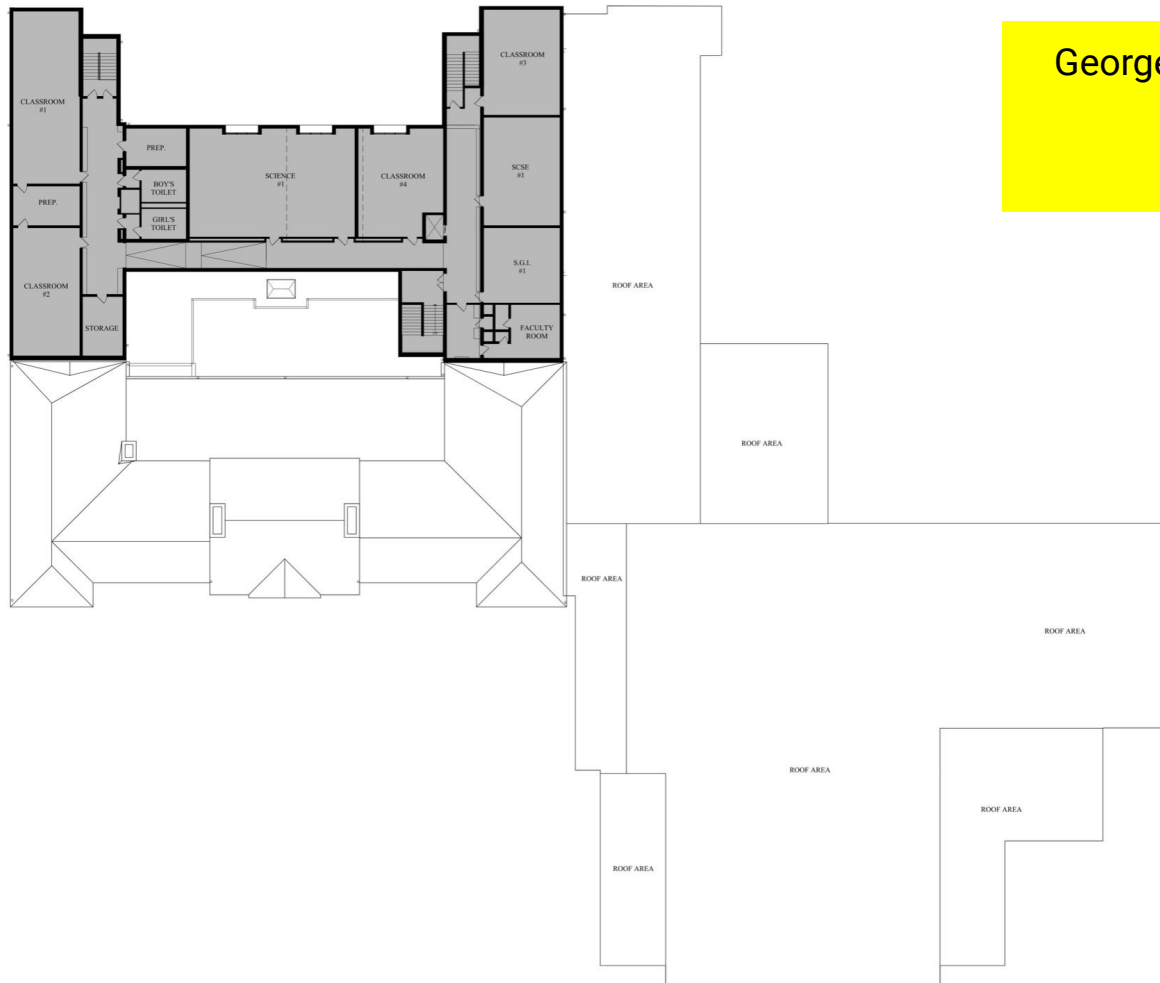


George White - Floor 1 Option 2



George White - Floor 2
Option 2
Additional Classrooms on 2nd Floor





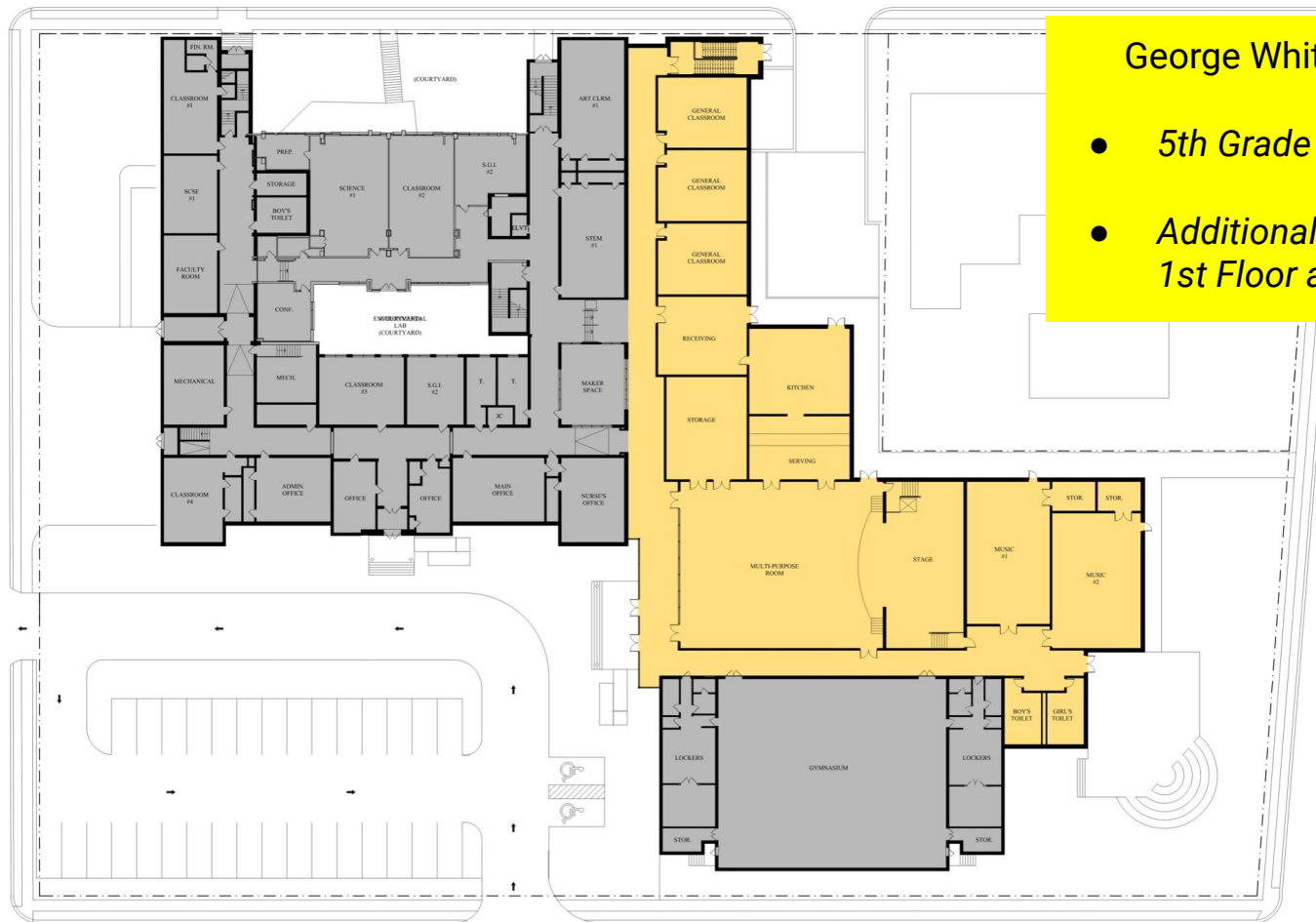
Meadowbrook
Addition -
Proposed



[illegible]

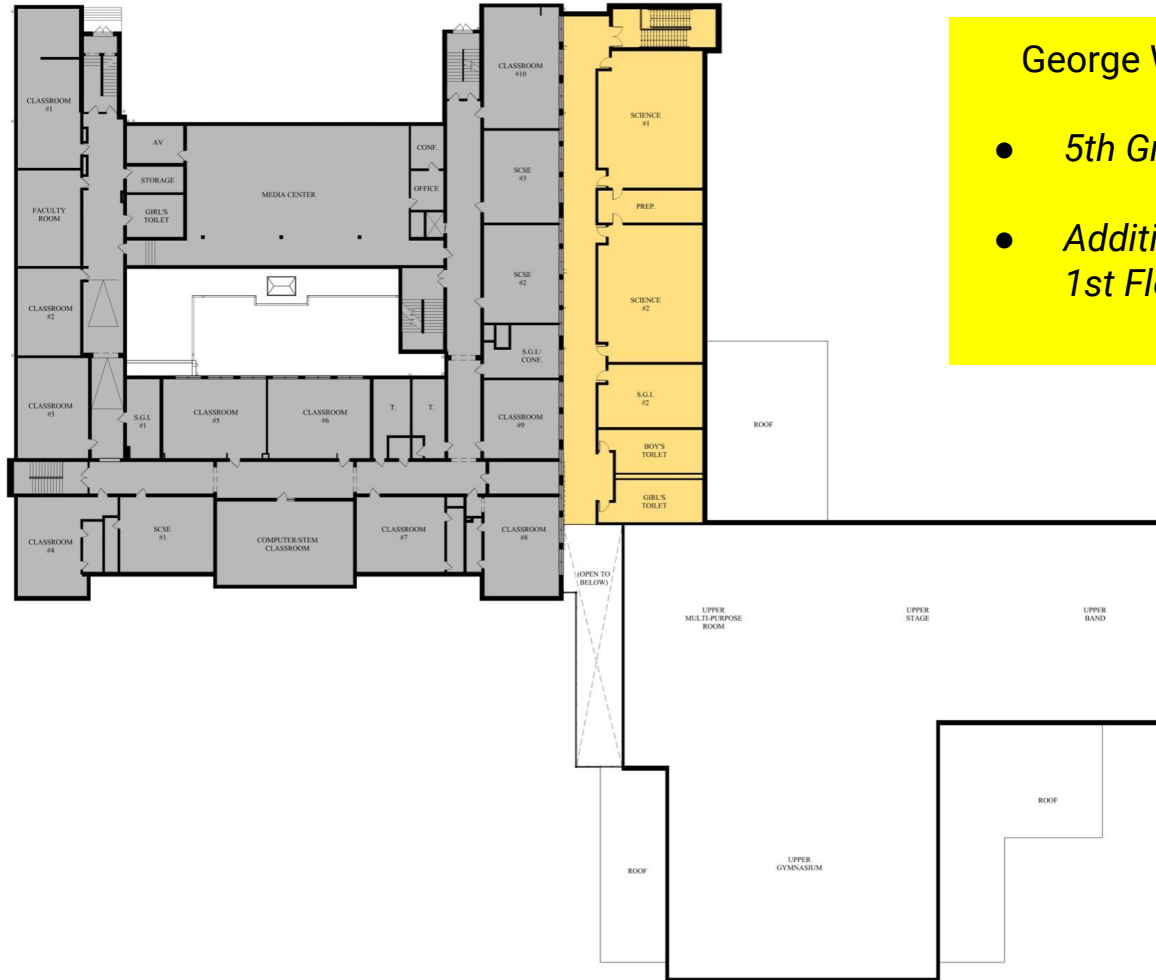
Option 3





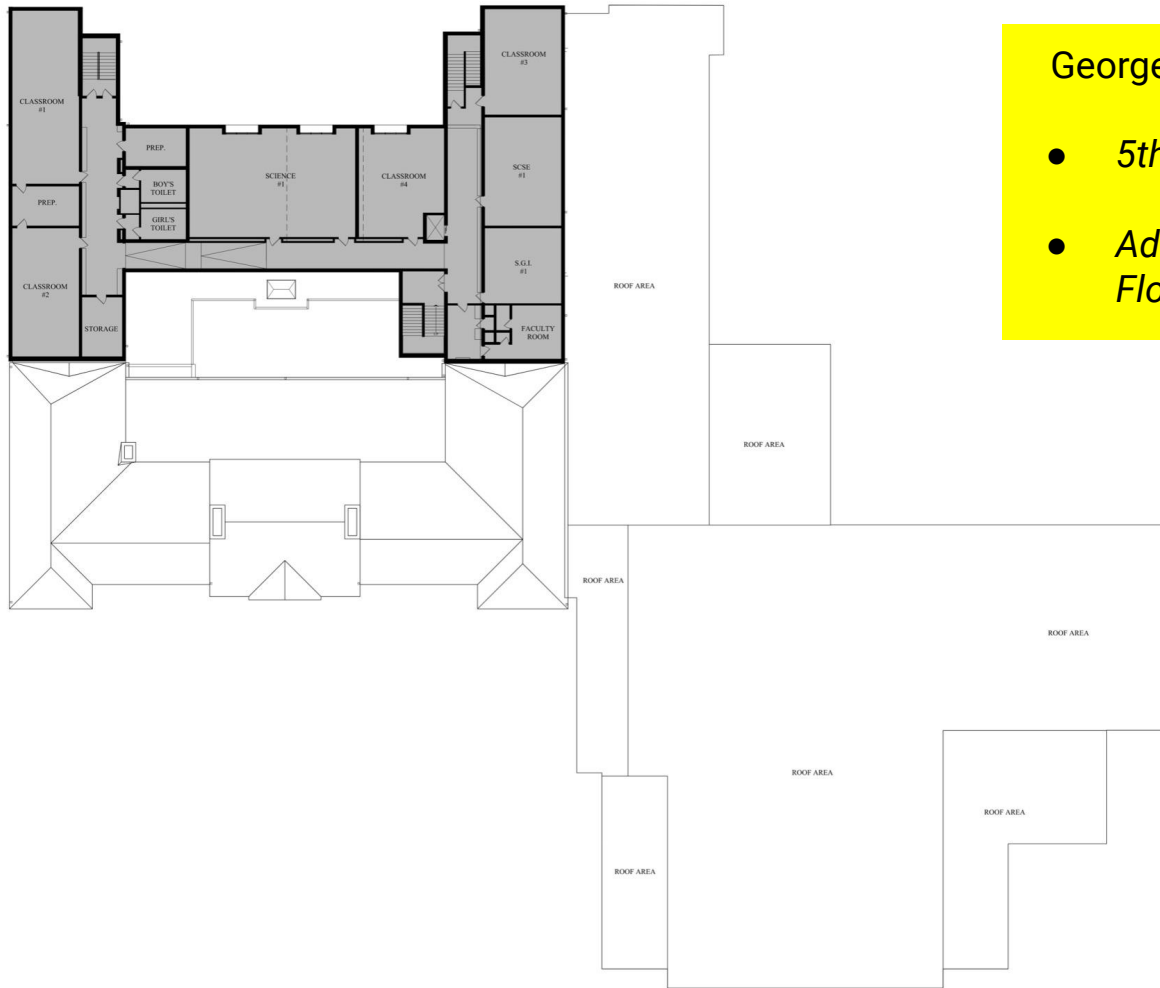
George White - Floor 1- Option 3

- *5th Grade Remains*
- *Additional Classrooms on 1st Floor and 2nd Floor*



George White - Floor 2- Option 3

- *5th Grade Remains*
- *Additional Classrooms on 1st Floor and 2nd Floor*



George White - Floor 3- Option 3

- *5th Grade Remains*
- *Additional Classrooms on 1st Floor and 2nd Floor*

Costs

All costs are estimates

A dark blue diagonal gradient bar that starts from the bottom left and extends towards the top right, covering the lower half of the slide.

Cost Constants with Each Plan

	Yearly	Monthly
<i>GW Renovations</i>	\$563	\$47
<i>Temporary Classrooms</i>	\$40	\$3.34
<i>Field</i>	\$14	\$1.17
<i>These costs do not reflect any additional space at ABS or Meadowbrook.</i>		

	Yearly	Monthly
GW Renovations	\$563	\$47
Temporary Classrooms	\$40	\$3.34
Field	\$14	\$1.17
Smith School Addition	\$123	\$10.25
Meadowbrook Addition	\$75	\$6.25
Cost	\$49.8m	
Est. State Aid	\$15.9 m	
Estimated Final Costs	\$815	\$68

Option 1

Estimated Costs – Renovate GW & Relocate 5th Grade to Respective Elementary Schools

	Yearly	Monthly
GW Renovations	\$563	\$47
Temporary Classrooms	\$40	\$3.34
Field	\$14	\$1.17
Smith School Addition	\$123	\$10.25
Meadowbrook Addition	\$75	\$6.25
Enhanced Program	\$90	\$7.50
Cost	\$55.2m	
Est. State Aid	\$16.06 m	
Estimated Final Costs	\$905	\$75.50

Option 2

Estimated Costs – Renovate GW & Relocate 5th Grade to Respective Elementary Schools,

Enhanced Programming

	Yearly	Monthly
GW Renovations	\$563	\$47
Temporary Classrooms	\$40	\$3.34
Field	\$14	\$1.17
5-8 Capacity (Including Enhanced Programming)	\$120	\$10
Cost	\$45.6m	
Est. State Aid	\$16.09 m	
Estimated Final Costs	\$737	\$61.50

Option 3
Estimated Costs – Renovate GW & 5th Grade Remains at GW

<i>Side-By-Side Comparison</i>	<i>Option 1</i>	<i>Option 2</i>	<i>Option 3</i>
<i>GW Renovations</i>	\$563	\$563	\$563
<i>Temporary Classrooms</i>	\$40	\$40	\$40
<i>Field</i>	\$14	\$14	\$14
<i>Smith School Addition</i>	\$123	\$123	N/A
<i>Meadowbrook Addition</i>	\$75	\$75	N/A
<i>5-8 Capacity</i>	N/A	N/A	\$120 (5-8 Capacity <u>and</u> Enhanced Programming)
<i>Enhanced Program</i>	N/A	\$90	
<i>Est. State Aid</i>	\$15.9 m	\$16.06 m	\$16.09 m
<i>Estimated Final Costs - Yearly/Monthly</i>	\$815/\$68	\$905/\$75.50	\$737/\$61.50

Breakout Sessions

- Groups are randomly organized by color coded index card.
- With your randomly selected group go to the location as indicated in the presentation.
- Each group will need 1 recorder and 1 speaker. This can be the same person.
- As indicated on the 1 pager, provide feedback to be shared when everyone comes back together.
- Breakout session will last about 25 minutes.

Breakout Sessions

Breakout Session Task

1. Identify Advantages and Disadvantages of each plan.
2. Which plan does the group feel will most benefit the children of Hillsdale, both current and future?
3. Is there a thought/idea that was not explored?

Breakout Sessions

Yellow Group A - 112

Yellow Group B -114

Blue Group A -115

Blue Group B -Music Room

Purple Group A -107

Purple Group B -105

Green Group A - Cafetorium

Green Group B -102

Pink Group A -Cafetorium

Pink Group B -101(carpet)

White Group A -Cafetorium

White Group B -101 A(wood floor)

Breakout
Sessions



Feedback
&
Sharing

Thank You!

A dark blue diagonal bar that starts from the bottom left corner and extends towards the top right corner, covering the lower half of the slide.